

Dave Farnham

‘Body’

E: davefarnhamstudio@gmail.com

W: www.davefarnham.co.uk

I: [@davefarnham](https://www.instagram.com/davefarnham)

T: [@davefarnhamuk](https://www.facebook.com/davefarnhamuk)

M: +447866091053

I am UK based artist who's exhibited nationally and internationally. The main focus of my current studio practice is namely an investigation into the deconstruction of life drawing and figurative sculpture using the collection and extraction of medical data.

My interest in the process of 3D printing and modelling lies in a desire to work against its connotation of facsimile and sameness and to instead render unique physiologies, exposing the corporeal fragility of the sitter or body from which the objects are derived.



'Black Heart on Wooden Trophy Mount' 2023
3D printed heart in PLA, Black 2.0, wooden trophy
27x25x7cm



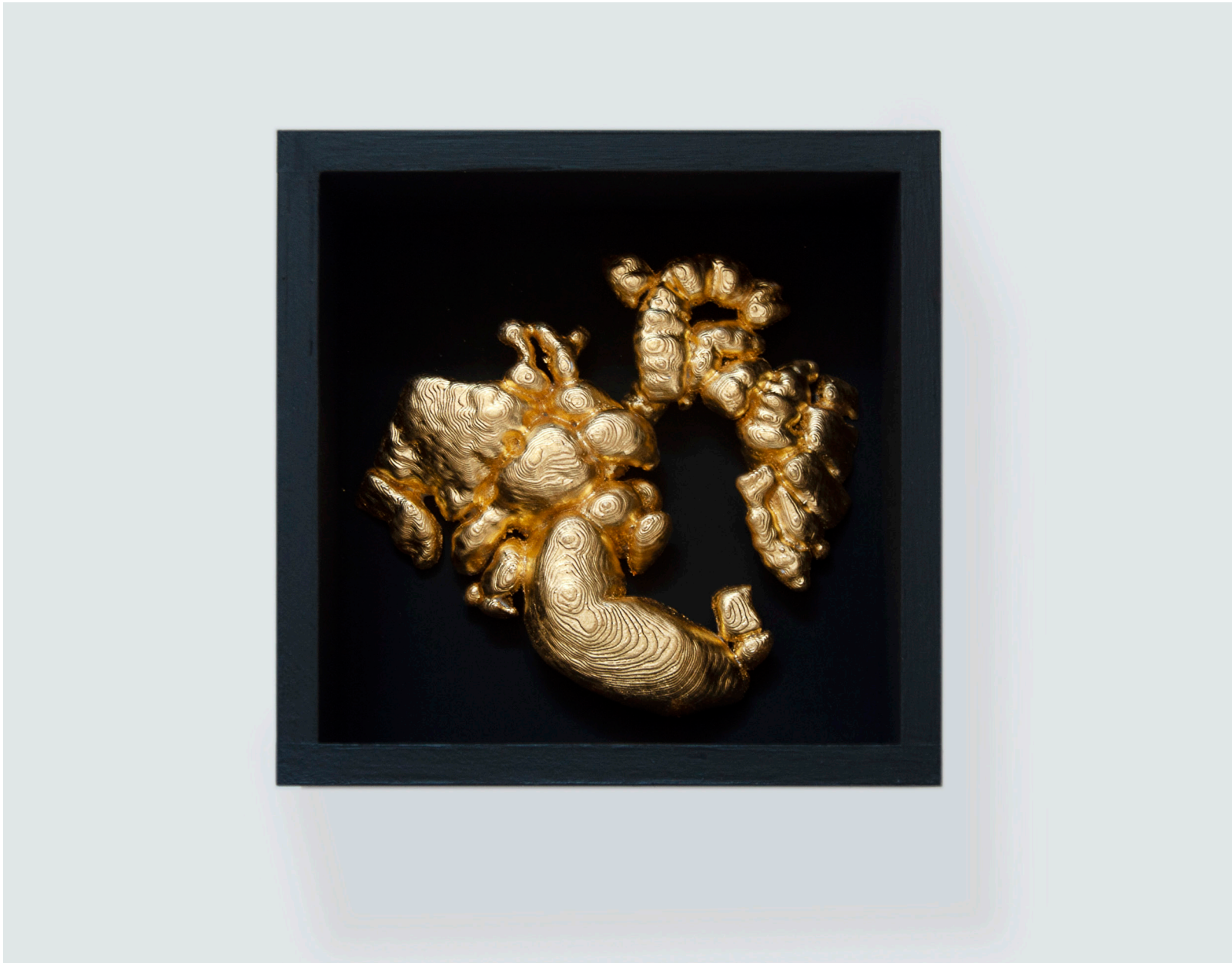
'Black Kidney in Gold Box' 2023
3D printed kidney in PLA, Black 2.0 paint,
24ct gold leaf wooden box.
15 x 15 x 6cm



3D printed lung in PLA, Black 2.0 paint,
24ct gold leaf wooden box.
15 x 15 x 6cm



'Heart in black box' 2022
3D Printed in PLA finished in 24ct gold leaf
15 x 15 x 6cm
1/5



'Intestines in black box' 2023
3D Printed in PLA finished in 24ct gold leaf
15 x 15 x 6cm
1/5



'Kidney in black box' 2022
3D Printed in PLA finished in 24ct gold leaf
15 x 15 x 6cm
1/5



'Lung in black box' 2022
3D Printed in PLA finished in 24ct gold leaf
15 x 15 x 6cm
1/5



'Kidney' 2021
3D printed heart finished in 24ct gold leaf on gloss white plate.
27 x 27 x 10cm
1/3



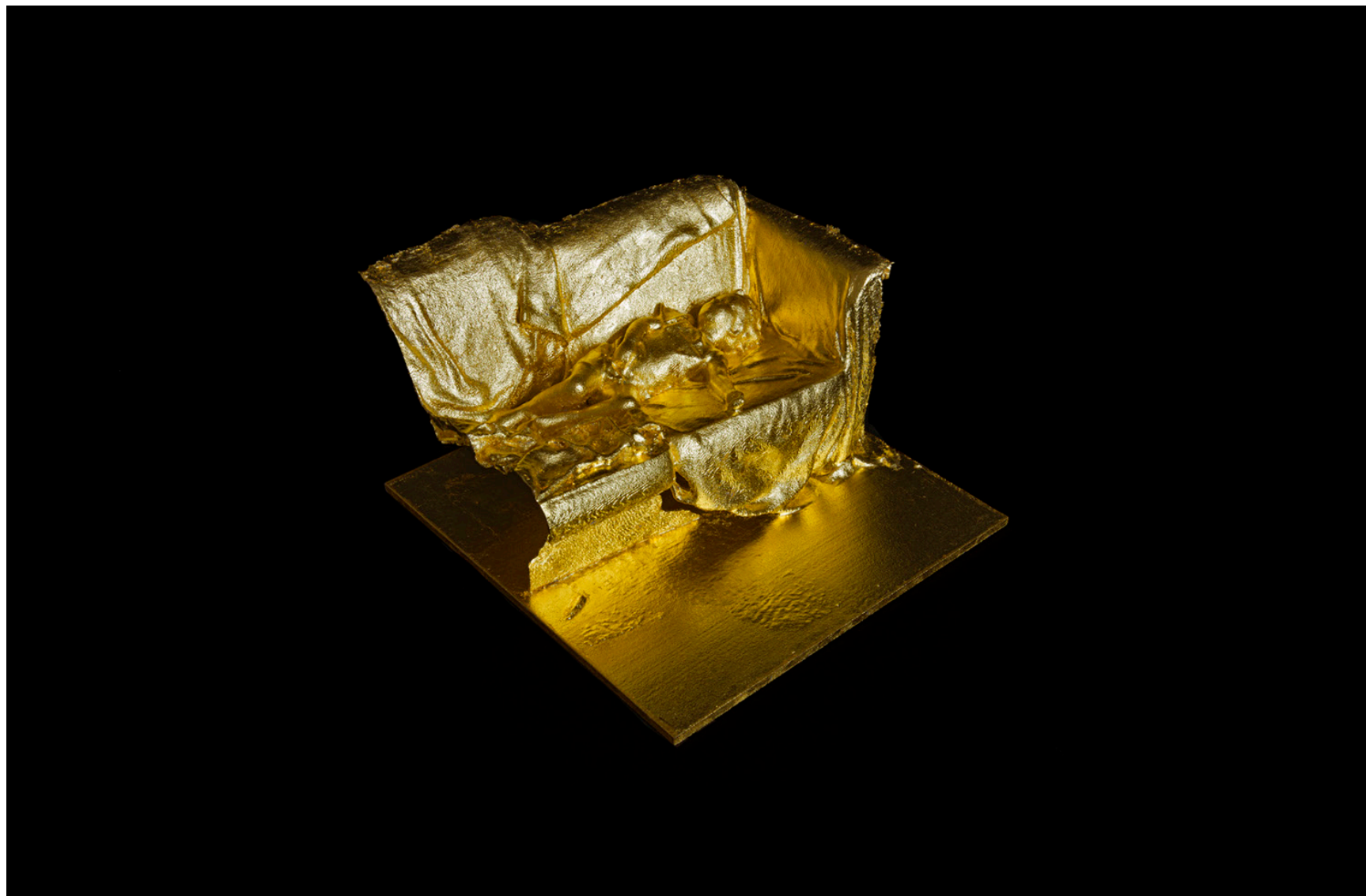
'Lung' 2021
3D printed heart finished in 24ct gold leaf on gloss white plate.
27 x 27 x 10cm
1/3



'Self Portrait' 2018
Laser engraving on gold anodized aluminium
31.0 x 16.0 x 3.0cm framed



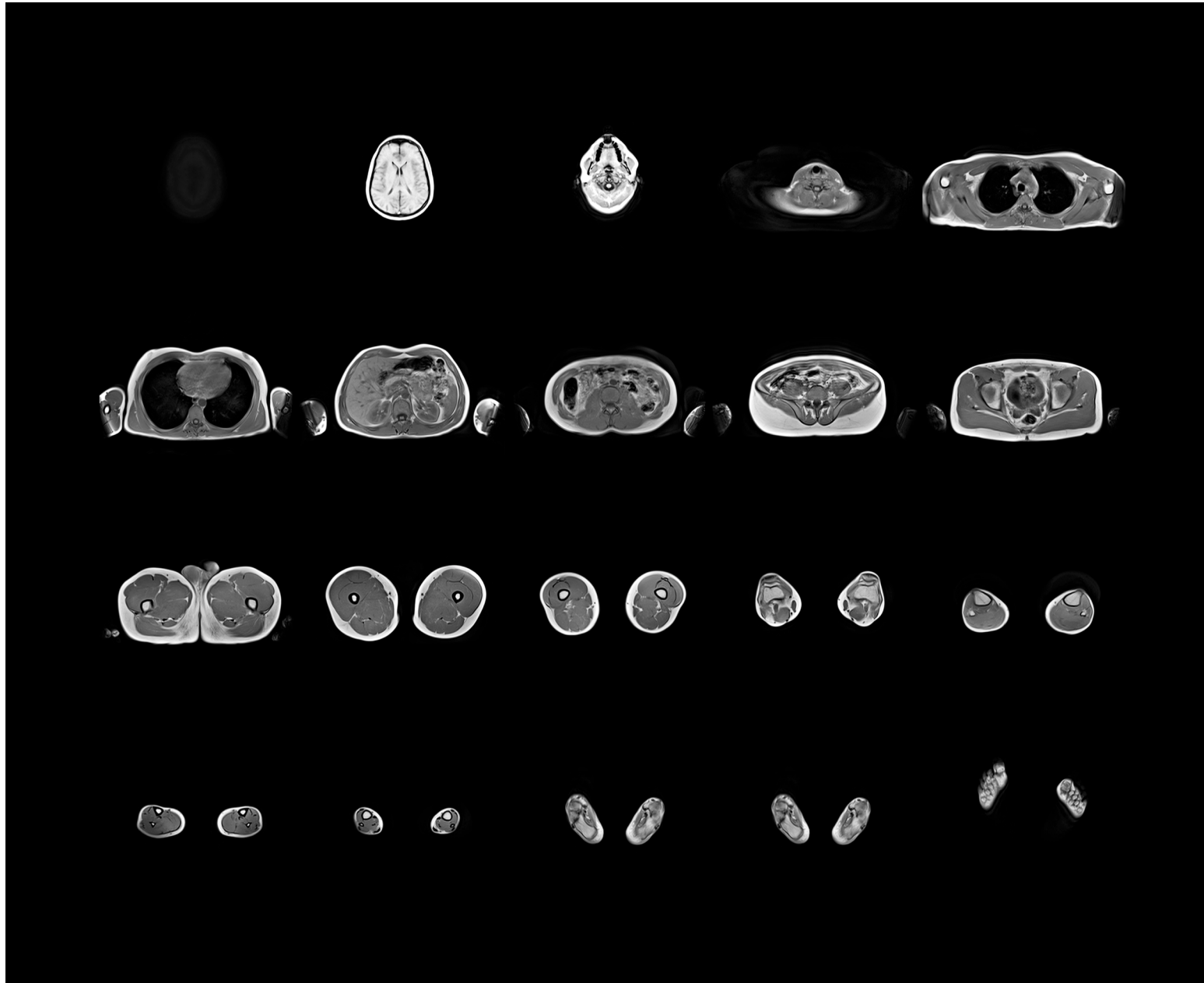
'Emma' 2020
3D print on painted wooden trophy mount
23 x 25 x 21cm
Edition 1/3



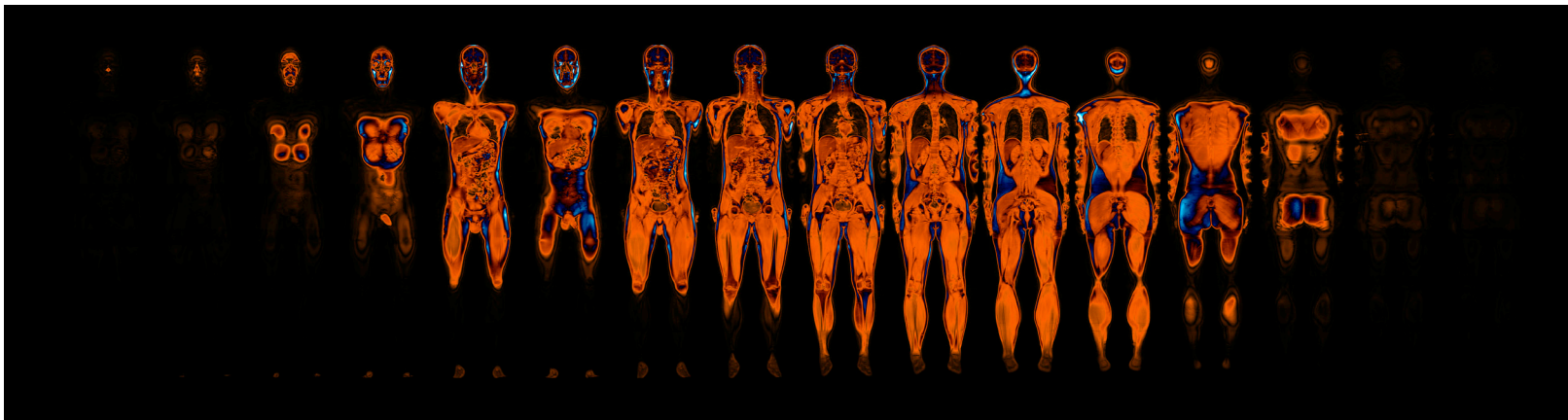
'Jack Sleeping' (Detail) 2017
3D print in SLS Nylon finished in 24ct gold leaf
20.0 x 20.0 x 20.0cm



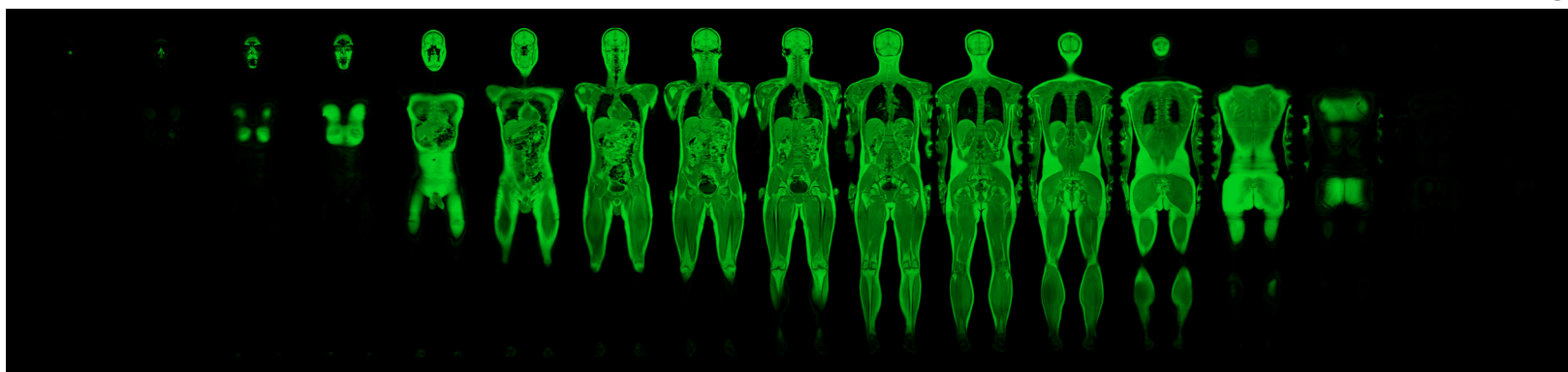
'Jack Sleeping' (Display) 2017
3D print in SLS Nylon finished in 24ct gold leaf
20.0 x 20.0 x 20.0cm



'Axial' 2018
C-Type on FujiFlex
40.0 x 50.0cm
Edition of 5



'Perfusion' 2018
C-Type on FujiFlex
20.0 x 86.4cm
Edition of 5



'Perfusion' (Green and Pink) 2022
C-Type on FujiFlex
20.0 x 86.4cm
Edition of 5

